



ENVIRONMENT PROTECTION NOTICE No. 8554/1

Issued under the *Environmental Management and Pollution Control Act 1994*

Issued to: **TASMANIAN WATER & SEWERAGE CORPORATION PTY LTD**
ACN 162 220 653
163 - 169 MAIN ROAD
MOONAH TAS 7009

Environmentally Relevant Activity: **The operation of a wastewater treatment plant (ACTIVITY TYPE: Wastewater Treatment Works)**
TRIABUNNA WASTEWATER TREATMENT PLANT,
TRIABUNNA TAS 7190

GROUND

I, Cindy Ong, Delegate for the Director, Environment Protection Authority, being satisfied in accordance with section 44(1)(d) of the *Environmental Management and Pollution Control Act 1994* (EMPCA) that in relation to the above-mentioned environmentally relevant activity that it is desirable to vary the conditions of a permit (see table below) hereby issue this environment protection notice to the above-mentioned person as the person responsible for the activity.

Permit No.	Date Granted	Granted By
DA02068	27 August 2002	Glamorgan/Spring Bay Council

PARTICULARS

The particulars of the grounds upon which this notice is issued are:

- 1 The Permit conditions need to be varied to reflect updated terminology and regulatory practice, to reflect continuous improvement consistent with the objectives of EMPCA and/or to clarify the meaning of the conditions.
- 2 It is necessary to remove conditions C1, C2, C3 and C4, as they relate to construction requirements that are no longer relevant.
- 3 It is necessary to remove conditions M1, M4 and M5 as these requirements are detailed in the table of monitoring requirements.
- 4 It is necessary to remove conditions C5, C6, C7, C8, C10, G1, G2, M6, R3, R4 and R5 of Permit No. 6236 because they detail requirements that have been fulfilled and/or are no longer required.
- 5 Condition E2 Permit No. 6236 is not specific and is not measurable. The Permit has been varied to remove this condition.
- 6 It is necessary to remove conditions because they pertain to specific requirements imposed

under EMPCA or Regulations thereunder.

- 7 It is desirable to add a condition requiring notification of the Director prior to the change in responsible person for the activity so that the Director is aware of changes to the person responsible for environmental management of the activity.
- 8 It is necessary to add a condition to require these conditions and associated documents to be accessible and persons working on The Land to be made aware of conditions as may be relevant to their work, to minimise environmental harm and/or nuisance.
- 9 A condition requiring notification of a change of ownership of The Land is needed because this Notice may affect title to land and the new owner's interests may be affected by pollutants emitted or disturbed by the activity.
- 10 It is necessary to vary conditions for decommissioning and rehabilitation to ensure it is undertaken in a manner to minimise environmental harm.
- 11 Consistent with the objectives of the State Policy on Water Quality Management 1997 it is necessary to add a condition to ensure effluent is preferentially discharged to effluent reuse to reduce the volume and impact of discharge on Vicarys Inlet.
- 12 It is necessary to vary the effluent quality limits for discharge to Vicarys Inlet to ensure the limits are appropriate for the receiving environment and are achievable.
- 13 It is necessary to add a condition that requires signage on land near effluent outfalls. Signage giving notice of potential public health risks is considered best practice environmental management.
- 14 The permit does not contain conditions in relation to the dealing with environmentally hazardous substances. Environmentally hazardous substances are likely to be stored and handled on The Land and current best practice environmental management necessitates conditions to be added for the storage and handling of environmentally hazardous substances.
- 15 Monitoring and reporting requirements set out in the Permit conditions need to be varied to reflect current best practice environmental management and to require accurate measurement of emissions and their impact upon the receiving environment and to consistently inform the Director of the results of monitoring.
- 16 It is necessary to vary conditions setting noise emission limits to minimise environmental nuisance and manage noise emissions, in accordance with the Environment Protection Policy (Noise) 2009.
- 17 A condition requiring an inflow and infiltration plan is needed to ensure that best practice environmental management is applied to inflow and infiltration issues that increase the risk of unauthorised sewage discharges to the environment.
- 18 It is necessary to add a condition requiring contingency management. The risk of environmental harm from the activity is reduced by having documented plans and procedures in place for unplanned events that may occur.

DEFINITIONS

Unless the contrary appears, words and expressions used in this Notice have the meaning given to them in Schedule 1 of this Notice and in the EMPCA. If there is any inconsistency between a definition in the EMPCA and a definition in this Notice, the EMPCA prevails to the extent of the inconsistency.

REQUIREMENTS

The person responsible for the activity must comply with the varied permit conditions as set out in Schedule 2 of this Notice.

INFORMATION

Attention is drawn to **Schedule 3**, which contains important additional information.

PENALTIES

If a person bound by an environment protection notice contravenes a requirement of the notice, that person is guilty of an offence and is liable on summary conviction to a penalty not exceeding 1000 penalty units in the case of a body corporate or 500 penalty units in any other case (at the time of issuance of this Notice one penalty unit is equal to \$163.00).

NOTICE TAKES EFFECT

This notice takes effect on the date on which it is served upon you.

APPEAL RIGHTS

You may appeal to the Appeal Tribunal against this notice, or against any requirement contained in the notice, within 14 days from the date on which the notice is served, by writing to:

The Chairperson
Resource Management and Planning Appeal Tribunal
GPO Box 2036
Hobart TAS 7001

Signed:


DELEGATE FOR THE DIRECTOR, ENVIRONMENT PROTECTION AUTHORITY

Date:

29/5/19

Table Of Contents

Schedule 1: Definitions..... 6

Schedule 2: Conditions..... 8

 Maximum Quantities..... 8

 Q1 Regulatory limits 8

 General..... 8

 G1 Access to and awareness of conditions and associated documents..... 8

 G2 Incident response..... 8

 G3 No changes without approval..... 8

 G4 Change of ownership..... 8

 G5 Change of responsibility..... 8

 G6 Complaints register..... 8

 G7 Annual Environmental Review..... 9

 G8 Additional annual reporting information for wastewater reuse schemes..... 9

 Atmospheric..... 9

 A1 Odour management..... 9

 Decommissioning And Rehabilitation..... 9

 DC1 Notification of cessation..... 9

 DC2 DRP requirements..... 9

 DC3 Rehabilitation following cessation..... 10

 Effluent..... 10

 EF1 Effluent discharge locations..... 10

 EF2 Effluent quality limits for discharge to the Vicarys Inlet..... 10

 EF3 Effluent quality limits for discharge to the Triabunna WWTP reuse scheme..... 10

 EF4 Effluent Discharge to Water..... 11

 EF5 Blue-green algae notification..... 11

 EF6 Signage of discharge location..... 11

 Hazardous Substances..... 11

 H1 Storage and handling of hazardous materials..... 11

 Monitoring..... 11

 M1 Samples and measurements for monitoring purposes..... 11

 M2 Monitoring requirements..... 12

 M3 Monitoring reporting and record keeping..... 12

 M4 Flow monitoring equipment..... 12

 M5 Signage of monitoring points..... 12

 Noise Control..... 13

 N1 Noise emission limits..... 13

 Operations..... 13

 OP1 Contingency management..... 13

 OP2 Operational Procedures and Maintenance Manual..... 14

 OP3 Inflow and Infiltration Management Plan..... 14

 OP4 Lagoon maintenance..... 14

 Waste Management..... 14

 WM1 Controlled Waste Register..... 14

 WM2 Sewage Sludge Management Plan..... 15

Schedule 3: Information..... 16

 Legal Obligations..... 16

 LO1 EMPCA..... 16

 LO2 Change of responsibility..... 16

 Other Information..... 16

OII Notification of incidents under section 32 of EMPCA16

Attachments

Attachment 1: Plan of Activity EPN 8554_1 - Triabunna (modified: 24/05/2019 10:16)..... 1 page
Attachment 2: Table of monitoring requirements Triabunna WWTP (modified: 24/05/2019 10:15).....2 pages

Schedule 1: Definitions

Activity means any environmentally relevant activity (as defined in Section 3 of EMPCA) to which this document relates, and includes more than one such activity.

Authorized Officer means an authorized officer under section 20 of EMPCA.

Controlled Waste has the meaning described in Section 3(1) of EMPCA.

Director means the Director, Environment Protection Authority holding office under Section 18 of EMPCA and includes a person authorised in writing by the Director to exercise a power or function on the Director's behalf.

DRP means Decommissioning and Rehabilitation Plan.

Effluent means wastewater discharged from The Land.

EMPCA means the *Environmental Management and Pollution Control Act 1994*.

Environmental Harm and **Material Environmental Harm** and **Serious Environmental Harm** each have the meanings ascribed to them in Section 5 of EMPCA.

Environmental Nuisance and **Pollutant** each have the meanings ascribed to them in Section 3 of EMPCA.

Environmentally Hazardous Material means any substance or mixture of substances of a nature or held in quantities which present a reasonably foreseeable risk of causing serious or material environmental harm if released to the environment and includes fuels, oils, waste and chemicals but excludes sewage.

Inflow and Infiltration Management Plan means the documents entitled 'TasWater Inflow and Infiltration Strategy v1.0 10/3/2016' in conjunction with the document entitled 'TasWater Inflow and Infiltration Management Plan v1.0 19/05/2016' and includes any amendment to or substitution of these documents approved in writing by the Director.

Median means the value at which the relevant parameter is exceeded by no more than 50 percent of all sample results over a 12 month period.

Noise Sensitive Premises means residences and residential zones (whether occupied or not), schools, hospitals, caravan parks and similar land uses involving the presence of individual people for extended periods, except in the course of their employment or for recreation.

Person Responsible is any person who is or was responsible for the environmentally relevant activity to which this document relates and includes the officers, employees, contractors, joint venture partners and agents of that person, and includes a body corporate.

Reporting Period means the financial year ending on 30 June of each calendar year.

Sewage Sludge means concentrated solids separated from wastewater during the wastewater treatment process.

Sewage Sludge Management Plan Guidelines means the document of this title published by EPA Division in September 2014, and includes any subsequent versions of this document.

Tasmanian Biosolids Reuse Guidelines means the document of this title published by the Department of Primary Industries, Water and Environment in August 1999, and includes any subsequent versions of this document.

Tasmanian Noise Measurement Procedures Manual means the document titled *Noise Measurement Procedures Manual*, by the Department of Environment, Parks, Heritage and the Arts, dated July 2008, and any amendment to or substitution of this document.

The Land means the land on which the activity to which this document relates may be carried out, and includes: buildings and other structures permanently fixed to the land, any part of the land covered with water, and any water covering the land. The Land falls within the area defined by:

- 1 Certificate of Title 138855/1; and
- 2 as further delineated at Attachment 1.

Wastewater means spent or used water (whether from industrial or domestic sources) containing a pollutant and includes stormwater which becomes mixed with wastewater.

Wastewater Reuse EMP means the document entitled *Triabunna WWTP Effluent Reuse Scheme DP&EMP*, dated March 2002 and includes any amendment to or substitution of this document approved in writing by the Director.

Wastewater Reuse Scheme means the Triabunna WWTP reuse scheme as described in the Wastewater Reuse EMP.

WWTP means the wastewater treatment plant located on The Land.

Schedule 2: Conditions

Maximum Quantities

Q1 Regulatory limits

- 1 The activity must not exceed the following limits :
 - 1.1 253 kilolitres per day of design capacity to treat an average dry weather flow of sewage or wastewater

General

G1 Access to and awareness of conditions and associated documents

A copy of these conditions and any associated documents referred to in these conditions must be held in a location that is known to and accessible to the person responsible for the activity. The person responsible for the activity must ensure that all persons who are responsible for undertaking work on The Land, including contractors and sub-contractors, are familiar with these conditions to the extent relevant to their work.

G2 Incident response

If an incident causing or threatening environmental nuisance, serious environmental harm or material environmental harm from pollution occurs in the course of the activity, then the person responsible for the activity must immediately take all reasonable and practicable action to minimise any adverse environmental effects from the incident.

G3 No changes without approval

- 1 The following changes, if they may cause or increase the emission of a pollutant which may cause material or serious environmental harm or environmental nuisance, must only take place in relation to the activity if such changes have been approved in writing by the EPA Board following its assessment of an application for a permit under the *Land Use Planning and Approvals Act 1993*, or approved in writing by the Director:
 - 1.1 a change to a process used in the course of carrying out the activity; or
 - 1.2 the construction, installation, alteration or removal of any structure or equipment used in the course of carrying out the activity; or
 - 1.3 a change in the quantity or characteristics of materials used in the course of carrying out the activity.

G4 Change of ownership

If the owner of The Land upon which the activity is carried out changes or is to change, then, as soon as reasonably practicable but no later than 30 days after becoming aware of the change or intended change in the ownership of The Land, the person responsible must notify the Director in writing of the change or intended change of ownership.

G5 Change of responsibility

If the person responsible for the activity intends to cease to be responsible for the activity, that person must notify the Director in writing of the full particulars of any person succeeding him or her as the person responsible for the activity, before such cessation.

G6 Complaints register

- 1 A public complaints register must be maintained. The public complaints register must, as a minimum, record the following detail in relation to each complaint received in which it is alleged that environmental harm (including an environmental nuisance) has been caused by the activity:

- 1.1 the date and time at which the complaint was received;
 - 1.2 contact details for the complainant (where provided);
 - 1.3 the subject-matter of the complaint;
 - 1.4 any investigations undertaken with regard to the complaint; and
 - 1.5 the manner in which the complaint was resolved, including any mitigation measures implemented.
- 2 Complaint records must be maintained for a period of at least 3 years.

G7 Annual Environmental Review

Unless otherwise approved by the Director a publicly available Annual Environmental Review must be submitted each year within 3 months of the end of the Reporting Period. The Annual Environmental Review must be prepared to the satisfaction of the Director using the latest version of the Annual Environmental Review Guidelines which are available on request from the Director.

G8 Additional annual reporting information for wastewater reuse schemes

- 1 Annual Environmental Reviews submitted in accordance with these conditions must include the following additional information:
 - 1.1 a statement indicating the degree of fulfilment or otherwise of environmental commitments and management prescriptions, including those relating to monitoring, contained in the Wastewater Reuse EMP; and
 - 1.2 details of any proposed variations to the operation of the wastewater reuse scheme from those described in the Wastewater Reuse EMP.
- 2 Where the Director is of the opinion that the Wastewater Reuse EMP needs updating to reflect the current practices and potential environmental impacts associated with the reuse scheme the Director may direct the person responsible to cause a new Wastewater Reuse EMP to be prepared and submitted for approval and the responsible person must comply with the direction or cease the discharge to the wastewater reuse scheme.

Atmospheric**A1 Odour management**

The person responsible must institute such odour management measures as are necessary to prevent odours causing environmental nuisance beyond the boundary of The Land.

Decommissioning And Rehabilitation**DC1 Notification of cessation**

Within 30 days of becoming aware of any event or decision which is likely to give rise to the permanent cessation of the activity, the person responsible for the activity must notify the Director in writing of that event or decision. The notice must specify the date upon which the activity is expected to cease or has ceased.

DC2 DRP requirements

Unless otherwise approved in writing by the Director, a Decommissioning and Rehabilitation Plan (DRP) for the activity must be submitted for approval to the Director within 30 days of the Director being notified of the planned cessation of the activity or by a date specified in writing by the Director. The DRP must be prepared in accordance with any guidelines provided by the Director.



DC3 Rehabilitation following cessation

- 1 Following permanent cessation of the activity, and unless otherwise approved in writing by the Director, The Land must be rehabilitated including:
 - 1.1 stabilisation of any land surfaces that may be subject to erosion;
 - 1.2 removal or mitigation of all environmental hazards or land contamination, that might pose an on-going risk of causing environmental harm; and
 - 1.3 decommissioning of any equipment that has not been removed.
- 2 Where a Decommissioning and Rehabilitation Plan (DRP) has been approved by the Director, decommissioning and rehabilitation must be carried out in accordance with that plan, as may be amended from time to time with written approval of the Director.

Effluent**EF1 Effluent discharge locations**

- 1 Effluent from the activity must only be discharged at the following discharge locations:
 - 1.1 Discharge to water: discharge to Vicarys Inlet at grid reference 575785E 5293961N (GDA94) as depicted on the plan at Attachment 1.
 - 1.2 Discharge to a wastewater reuse scheme: discharge to the Triabunna WWTP Reuse Scheme at grid reference 575944E 5294098N (GDA94) as shown on Attachment 1.
- 2 Effluent must not be discharged to the point referred to in clause 1.2 unless the effluent is managed in accordance with the Wastewater Reuse EMP.

EF2 Effluent quality limits for discharge to the Vicarys Inlet

- 1 Effluent discharged to Vicarys Inlet must comply with the effluent quality limits set out in the Table of Effluent Quality Limits for discharge to the Vicarys Inlet, at the Effluent Quality monitoring location specified in Attachment 1.
- 2 **Table of Effluent Quality Limits for discharge to the Vicarys Inlet**

Column 1	Column 2	Column 3	Column 6
Substance or measure	Unit of measurement	Minimum limit	Maximum limit
Biochemical Oxygen Demand	mg/L	-	50
Suspended Solids	mg/L	-	50
Ammonia Nitrogen	mg/L	-	21
Total Nitrogen	mg/L	-	32
Total Phosphorus	mg/L	-	10
Oil and Grease	mg/L	-	2
E. Coli	MPN/100mL	-	1500
pH	NA	6.5	8.5

EF3 Effluent quality limits for discharge to the Triabunna WWTP reuse scheme

- 1 The concentrations in effluent of substances or measures listed in Column 1 of the Table of Reuse Effluent Quality Limits below do not exceed the limits specified in Columns 3 and 4 when measured in the units in Column 2 at the point at which effluent is discharged to the wastewater reuse scheme.

2 Table of Reuse Effluent Quality Limits

Column 1	Column 2	Column 3	Column 4
Substance or measure	Unit of measurement	Median limit	Maximum limit
Biochemical Oxygen Demand	mg/L	NA	50
Thermotolerant Coliforms	MPN/100mL	1000	10,000
pH	NA	5.5	9

EF4 Effluent Discharge to Water

Effluent from the WWTP must only be discharged to Vicarys Inlet in the event that the Triabunna Reuse Scheme is at capacity or emergency discharge is required for other reasons.

EF5 Blue-green algae notification

Unless otherwise specified by the Director in writing, if blue-green algae are present at concentrations of 50,000 cells/mL or greater in the effluent at the treated effluent monitoring point, the Director must be notified within 24 hours of the monitoring results being received.

EF6 Signage of discharge location

Signage must be installed and maintained on land near to outfalls to discourage recreational activities within waters immediately around the outfall. Signage is to alert the public as to the proximity and nature of the discharge.

Hazardous Substances

H1 Storage and handling of hazardous materials

Unless otherwise approved in writing by the Director, environmentally hazardous material held on The Land, including chemicals, fuels and oils, must be located within impervious bunded areas or spill trays which are designed and maintained to contain at least 110% of the total volume of material.

Monitoring

M1 Samples and measurements for monitoring purposes

- 1 Any sample or measurement required under these conditions must be taken and processed in accordance with the following:
 - 1.1 sampling and measuring must be undertaken by a person with appropriate training, experience, and knowledge of the relevant procedure;
 - 1.2 the integrity of samples must be preserved prior to delivery to a laboratory;
 - 1.3 sample analysis or measurement must be conducted by a laboratory or testing facility accredited by the National Association of Testing Authorities (NATA), or a laboratory or testing facility approved in writing by the Director, for the specified test;
 - 1.4 details of methods employed in taking samples and measurements and results of sample analysis, and measurements must be retained for at least three (3) years after the date of collection; and
 - 1.5 sampling and measurement equipment must be maintained and operated in accordance with manufacturer's specifications and records of maintenance must be retained for at least three (3) years.

M2 Monitoring requirements

- 1 Unless otherwise specified in writing by the Director, monitoring must be undertaken in accordance with the Table of Monitoring at Attachment 2, as follows:
 - 1.1 the items listed in Column 1 must be sampled or tested at the locations listed in Column 2 for the parameters listed in Column 3 at the frequencies listed in Column 5 using the techniques listed in Column 6; and
 - 1.2 resultant monitoring data must be reported to the Director in accordance with the requirements set out in Column 7 and in the units listed in Column 4.

M3 Monitoring reporting and record keeping

- 1 Unless otherwise specified in writing by the Director, a Monthly Monitoring Report, in an electronic format approved by the Director, must be submitted to the Director within 21 days of receipt of laboratory analyses of samples collected for the previous monthly period. As a minimum, the Monthly Monitoring Report must include the following information:
 - 1.1 the laboratories at which sample analyses were carried out;
 - 1.2 contact details for a person responsible for managing monitoring programs;
 - 1.3 the estimated or measured average daily flow to the wastewater treatment plant for the previous monthly period; and
 - 1.4 for each sampling location or site test location:
 - 1.4.1 a location name which allows the location to be clearly identifiable;
 - 1.4.2 the date and time at which each sample was taken or site test conducted;
 - 1.4.3 the indicators for which analyses or tests were carried out and the units in which the results are reported; and
 - 1.4.4 the results for all sample analyses and site tests.
- 2 A record of all monthly monitoring reports submitted to the Director must be maintained and copies of all laboratory analysis reports referenced to the relevant Monthly Monitoring Reports kept for a minimum period of three years.

M4 Flow monitoring equipment

- 1 Flow monitoring equipment must be maintained in accurate working order in accordance with the manufacturer's specifications and, unless otherwise approved in writing by the Director, must be validated at least once every 12 months.
- 2 The dates on which flow monitoring equipment has been validated must be recorded and validation records kept for a minimum of 3 years.
- 3 For the purposes of this condition:
 - 3.1 'validate' means to undertake a set of actions including inspecting the flow monitoring equipment to check that it is installed in compliance with any relevant standards and is maintained to an acceptable state of repair, which provides an acceptable level of confidence that the flow monitoring equipment operates within an acceptable range of error under normal operating conditions.
 - 3.2 'Flow monitoring equipment' means an instrument, including a flow meter, that measures and may record a flow or level of liquid and includes any ancillary device attached to or incorporated into the instrument.

M5 Signage of monitoring points

With the exception of open water sampling, all monitoring points must be clearly marked to indicate the location and name of the monitoring point.

Noise Control

N1 Noise emission limits

- 1 Noise emissions from the activity when measured at any noise sensitive premises in other ownership and expressed as the equivalent continuous A-weighted sound pressure level must not exceed:
 - 1.1 50 dB(A) between 0800 hours and 1800 hours (Day time); and
 - 1.2 45 dB(A) between 1800 hours and 2200 hours (Evening time); and
 - 1.3 40 dB(A) between 2200 hours and 0800 hours (Night time).
- 2 Where the combined level of noise from the activity and the normal ambient noise exceeds the noise levels stated above, this condition will not be considered to be breached unless the noise emissions from the activity are audible and exceed the ambient noise levels by at least 5 dB(A).
- 3 The time interval over which noise levels are averaged must be 10 minutes or an alternative time interval specified in writing by the Director.
- 4 Measured noise levels must be adjusted for tonality, impulsiveness, modulation and low frequency in accordance with the Tasmanian Noise Measurement Procedures Manual.
- 5 All methods of measurement must be in accordance with the Tasmanian Noise Measurement Procedures Manual.

Operations

OP1 Contingency management

- 1 A Contingency Management Plan must be prepared and submitted to the Director within 12 months of the date on which these conditions take effect by a date specified in writing by the Director. The Plan must be maintained with relevant and contemporary information and must detail measures to prevent and mitigate environmental harm if an unplanned event occurs. Unplanned events that must be addressed by the plan include:
 - 1.1 incidents, accidents, power failures and malfunctions with the potential to cause the release of effluent that does not comply with these conditions;
 - 1.2 pipe ruptures leading to discharge of wastewater;
 - 1.3 development of blue green algae (cyanobacteria) concentrations that have the potential to cause environmental harm; and
 - 1.4 fire and flooding.
- 2 The Contingency Management Plan must include communication procedures for ensuring that water users that may be adversely impacted, the general public and relevant government agencies are informed of any unplanned event to the extent necessary to allow them to take precautions against adverse impacts upon the environment, human health and livestock health.
- 3 As far as is reasonable and practicable, the Contingency Management Plan must include contact details for all water users that may be impacted by an unplanned event and must be kept up to date by the person responsible.
- 4 The person responsible must ensure that all personnel are aware of the Contingency Management Plan and their responsibilities in relation to unplanned events and have access at all times to the Contingency Management Plan.
- 5 The Contingency Management Plan must be implemented if an unplanned event occurs.



OP2 Operational Procedures and Maintenance Manual

- 1 An Operational Procedures and Maintenance Manual ('the Manual') must be developed within 12 months of the date on which these conditions take effect or by a date specified in writing by the Director. The Manual must provide detailed information relating to the activity and must detail operational procedures as required to ensure compliance with these conditions.
- 2 The Manual must be prepared in accordance with any reasonable guidelines provided by the Director. If no guidelines are provided, the Manual must:
 - 2.1 be written in an easy to understand format, with checklists, diagrams, instructions and photographs as appropriate.
 - 2.2 be available for easy reference by operational staff, including any documents referenced by the Manual.
 - 2.3 be clear about who is responsible for carrying out tasks, as well as how, when or how often tasks should be performed.
- 3 The Manual must be kept up to date, and must take into account environment related complaints, incidents and changes to the activity.

OP3 Inflow and Infiltration Management Plan

- 1 An Inflow and Infiltration ('I&I') Management Plan must be submitted annually by the person responsible to the Director for approval by 30 September each year or by a date otherwise specified in writing by the Director.
- 2 The person responsible must implement and act in accordance with the approved I&I Management Plan to the extent that it relates to the WWTP on the land.

OP4 Lagoon maintenance

- 1 Floating matter including grass, weeds and rubbish must not be allowed to accumulate on the surface of any ponds or lagoons.
- 2 All lagoon and pond embankments must be kept in good repair and free of woody vegetation and rubbish.

Waste Management**WM1 Controlled Waste Register**

- 1 A Controlled Waste Register, to document storage and movement of sewage screenings, grit material, sewage sludge and biosolids must be maintained.
- 2 The Controlled Waste Register must:
 - 2.1 keep an accurate record of type and quantity of Controlled Wastes stored on The Land, with the exception of sewage sludge contained within lagoons; and
 - 2.2 record the following detail in relation to Controlled Waste removed from The Land:
 - 2.2.1 the type of Controlled Waste;
 - 2.2.2 the quantity of Controlled Waste;
 - 2.2.3 the Controlled Waste Transporter who moved the Controlled Waste;
 - 2.2.4 the date the Controlled Waste was moved;
 - 2.2.5 the recipient of the Controlled Waste; and
 - 2.2.6 the destination address of the Controlled Waste.
- 3 Controlled Waste records must be maintained for a period of at least 3 years.



WM2 Sewage Sludge Management Plan

- 1 A Sewage Sludge Management Plan must be submitted annually by the person responsible to the Director for approval by 30 September, or by a date specified in writing by the Director.
- 2 The Sewage Sludge Management Plan must be prepared in accordance with the *Sewage Sludge Management Plan Guidelines* and the *Tasmanian Biosolids Reuse Guidelines*.
- 3 The person responsible must implement and act in accordance with the approved Sewage Sludge Management Plan.



Schedule 3: Information

Legal Obligations

LO1 EMPCA

The activity must be conducted in accordance with the requirements of the *Environmental Management and Pollution Control Act 1994* and Regulations thereunder. The conditions of this document must not be construed as an exemption from any of those requirements.

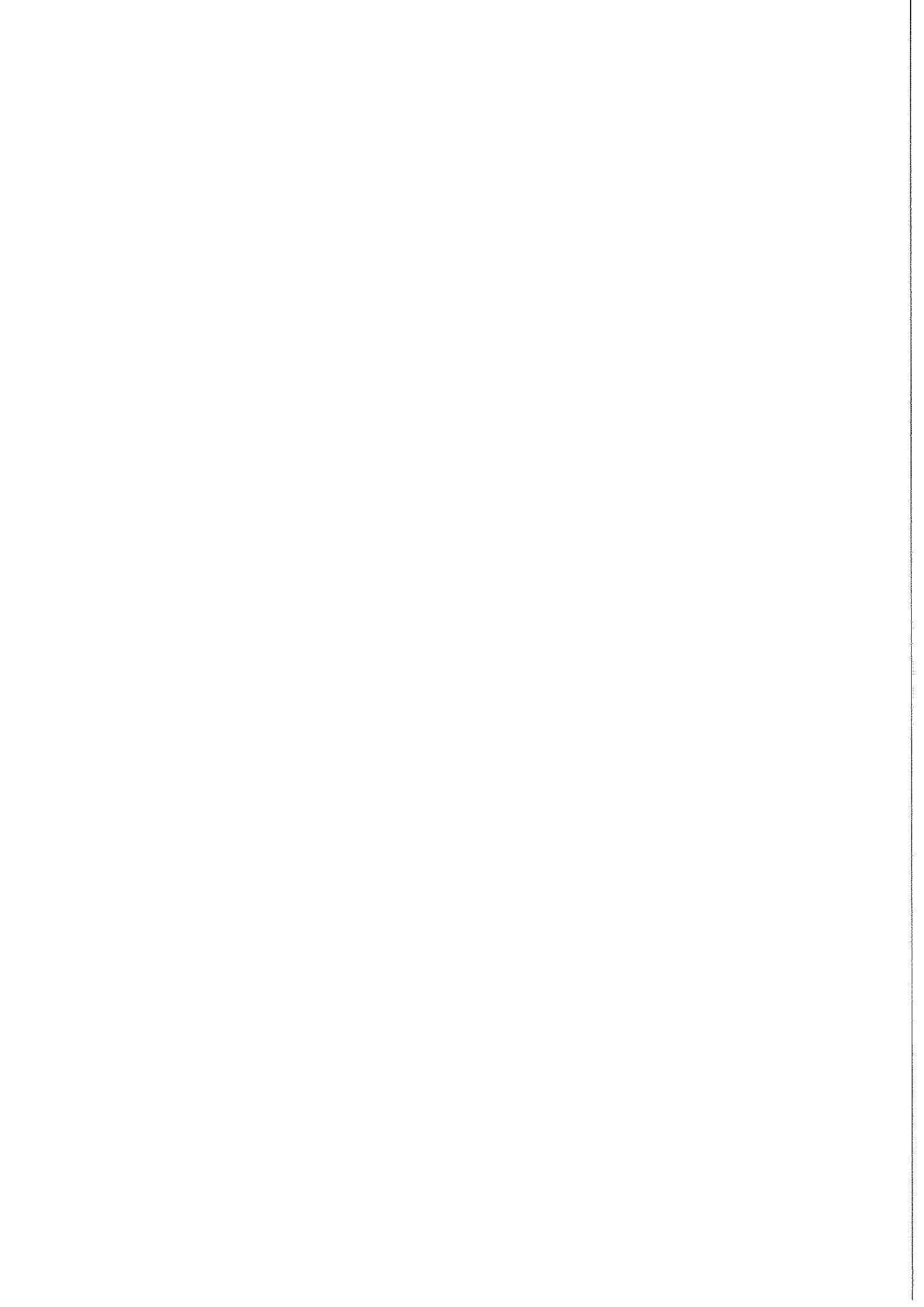
LO2 Change of responsibility

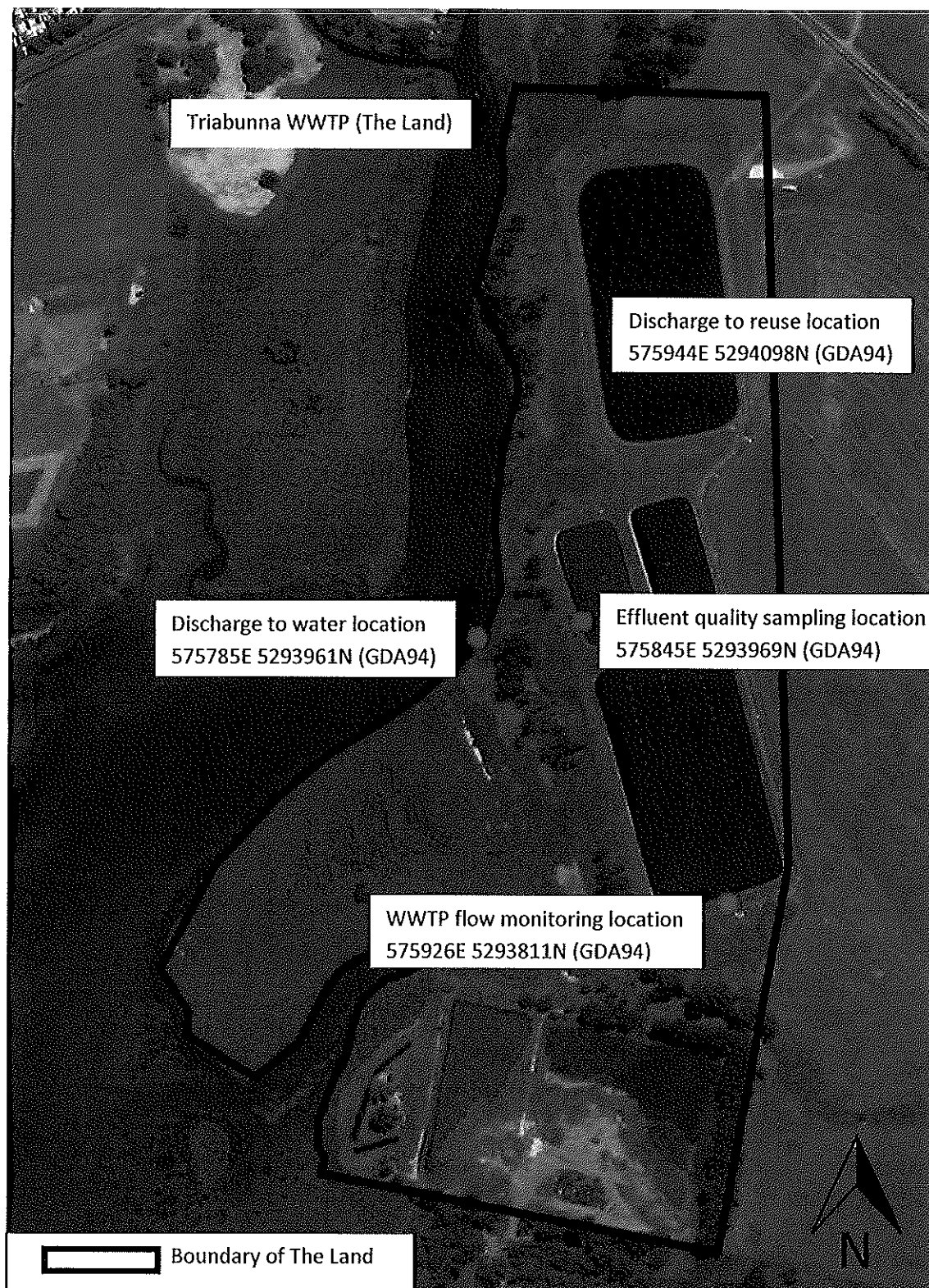
If the person responsible for the activity ceases to be responsible for the activity, they must notify the Director in accordance with Section 45 of the EMPCA.

Other Information

OI1 Notification of incidents under section 32 of EMPCA

Where a person is required by section 32 of EMPCA to notify the Director of the release of a pollutant, the Director can be notified by telephoning **1800 005 171** (a 24-hour emergency telephone number).





All coordinates are based on best available information at the time of EPN issue but can only be considered accurate within a few meters.

UO
29 MAY 2019

ATTACHMENT 2: TABLE OF MONITORING REQUIREMENTS FOR EPN 8554/1

Column 1 Item	Column 2 Sampling locations	Column 3 Parameter	Column 4 Unit of measure	Column 5 Sampling or testing frequency	Column 6 Sampling or testing technique	Column 7 Reporting requirements	
WWTP inflow	WWTP inlet At approximate coordinates GDA94: 575926E 5293811N	Flow	kL/day	Continuous measurement	Flow meter	<ol style="list-style-type: none"> To be reported in the Monthly Monitoring Report as an average for the reporting period or daily flow. To be reported in the Monthly Monitoring Report or Annual Environmental Review as monthly averages of daily flow. 	
		Effluent Quality					
Effluent Quality	Effluent quality monitoring location At approximate coordinates GDA94: 575845E 5293969N	pH	-	Monthly	Field Test	<ol style="list-style-type: none"> Results must be reported in the monthly monitoring report; and a summary of results must be provided in the Annual Environmental Review 	
		Temperature	°C				
		Conductivity	dS/m				
		Total Residual Chlorine	mg/L				
		E. coli	MPN/100mL		Monthly		Grab Sample
		Enterococci	MPN/100mL				
		Biochemical Oxygen Demand	mg/L				
		Suspended Solids	mg/L				
		Ammonia-Nitrogen	mg/L				
		Nitrate-Nitrogen	mg/L				
		Nitrite-Nitrogen	mg/L				
		Total Nitrogen	mg/L				
		Total Phosphorus	mg/L				
		Oil and Grease	mg/L				
		Alkalinity	mg/L		Annually		
		Calcium	mg/L				
		Chloride	mg/L				
		Potassium	mg/L				
		Magnesium	mg/L				
		Molybdenum	mg/L				
Sodium	mg/L						
Sulphate	mg/L						
Arsenic (total)	mg/L						
Boron	mg/L						
Cadmium	mg/L						
Chromium (total)	mg/L						
Copper	mg/L						
Lead	mg/L						
Manganese	mg/L						



Column 1 Item	Column 2 Sampling locations	Column 3 Parameter	Column 4 Unit of measure	Column 5 Sampling or testing frequency	Column 6 Sampling or testing technique	Column 7 Reporting requirements
Groundwater	Groundwater monitoring bores at locations on the Land to be approved by the Director in accordance with these conditions.	Mercury	mg/L	Monthly between November – March (or until no longer present) when discharging to water Annually		1. Results must be submitted in form of a report prepared by a suitably qualified professional. The report must provide interpretation whether monitoring results indicate evidence of environmental harm caused by the activity.
		Nickel	mg/L			
		Selenium	mg/L			
		Zinc	mg/L			
		Blue-green Algae	cells/mL			
		Standing water level	m bgs			
		pH	-			
		Temperature	°C			
		Conductivity	dS/m			
		Total Dissolved Solids	mg/L			
		Ammonia-Nitrogen	mg/L			
		Nitrite-Nitrogen	mg/L			
		Nitrate-Nitrogen	mg/L			
		Total Nitrogen	mg/L			
Total Phosphorus	mg/L					
Dissolved Reactive Phosphorus	mg/L					
E.coli	MPN/100mL					
Enterococci	MPN/100mL					
Sludge/Biosolids	Sludge / Biosolids located on the Land	In accordance with the Tasmanian Biosolids Reuse Guidelines 1999, or as otherwise approved by the Director.	In accordance with the Tasmanian Biosolids Reuse Guidelines 1999, or as otherwise approved by the Director.	In accordance with the Tasmanian Biosolids Reuse Guidelines 1999, or as otherwise approved by the Director.	In accordance with the Tasmanian Biosolids Reuse Guidelines 1999, or as otherwise approved by the Director.	1. As required in the Annual Environmental Review. 2. As otherwise approved by the Director.


29 MAY 2019